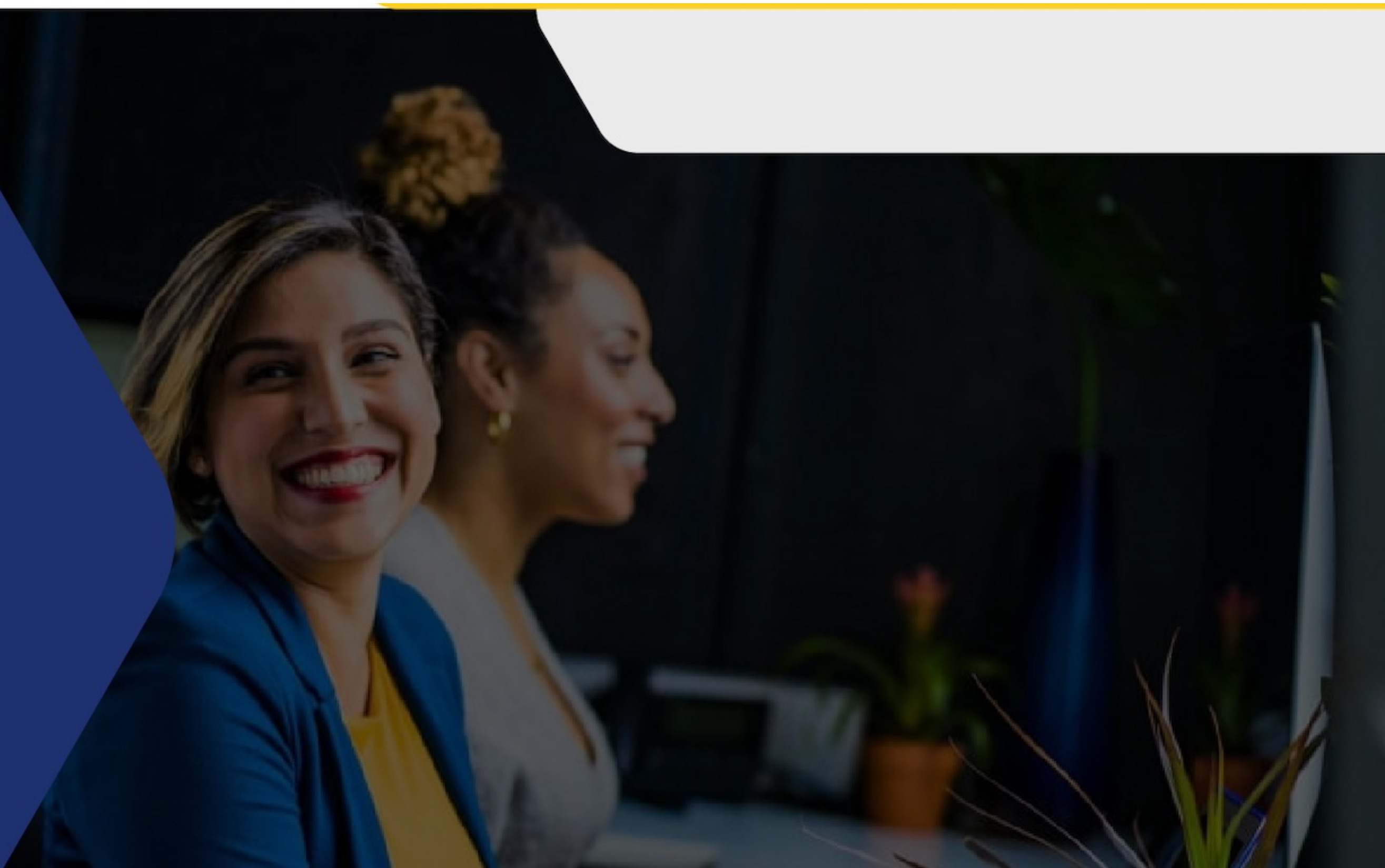


Unlock the Power of Employee Happiness and Organisational Success

The IEHWN2025 Employee Happiness and Wellbeing Navigator is a revolutionary tool that empowers organisations to measure, understand, and enhance employee satisfaction and overall workplace culture.



Why IEHWN2025?

1. Comprehensive Assessment Across Key Areas

- The IEHWN2025 Navigator evaluates critical dimensions of employee experience, including Leadership, Organisational Environment and Climate, Career Control, Teamwork-Led Supervision, Organisational Effectiveness, Reward and Recognition, and Employee Feedback.
- This holistic approach provides actionable insights that drive meaningful change and sustainable organisational growth.

2. AI-Driven Insights for Strategic Decision-Making

- Harness the power of advanced AI analytics to transform raw employee feedback into actionable strategies.
- Our sophisticated reporting system identifies trends, strengths, and areas for improvement, helping leaders make data-driven decisions that align with business goals.

3. Benchmarking for Continuous Improvement

- Compare your organisation's performance against global benchmarks to understand your competitive position.
- Identify gaps and implement best practices to stay ahead in employee engagement and organisational well-being.

4. Empower Employee Voice and Engagement

- Gain a deep understanding of employee sentiment through structured feedback mechanisms.
- Foster a culture of trust and inclusivity by showing employees that their opinions shape the future of the organisation.

5. Enhanced Organisational Performance

- Happier employees lead to higher productivity, lower turnover, and improved customer experiences.
- Investing in employee well-being drives business success and enhances employer branding.

6. Flexible and Scalable Solutions

- Whether you're an SME or a large enterprise, IEHWN2025 is designed to adapt to your organisational needs.
- Our modular approach allows businesses to focus on specific areas while maintaining an overarching view of employee happiness.

7. Seamless Integration with Existing HR Initiatives

- The Navigator complements your existing HR strategies and programs, ensuring alignment with broader business objectives.
- It serves as an essential tool for HR teams, providing insights that enhance recruitment, retention, and employee development strategies.

8. Affordable and Accessible

- Our cost-effective pricing model ensures that organisations of all sizes can benefit from world-class insights without breaking the budget.
- With easy-to-use digital access, leaders can review reports and insights anytime, anywhere.

9. Certifications and Recognition

- Organisations that achieve high performance levels can gain ICXI certification, providing a recognised endorsement of their commitment to employee well-being.
- Certification helps organisations stand out as employers of choice in their industry.

10. Supporting a Culture of Continuous Learning and Development

- IEHWN2025 promotes a learning culture where insights are used to drive ongoing improvement.
- Our tailored recommendations guide organisations in implementing targeted well-being initiatives.

Your Competitive Advantage with IEHWN2025

The IEHWN2025 Employee Happiness and Wellbeing Navigator is more than just an assessment tool; it's a strategic partner in driving organisational excellence. By investing in employee happiness, you are investing in your business's future success.

Are you ready to elevate your organisation's employee experience to new heights?

Contact us today to learn more about how IEHWN2025 can transform your workplace.

The IEHWN2025 Process

1. Conduct the Self-Assessment: Organisations complete the structured self-assessment across all seven dimensions.
2. Gather Employee Feedback: Employees provide their perspectives through an anonymous, user-friendly survey.
3. Receive a Detailed AI-Driven Insights Report: Gain comprehensive insights and actionable recommendations tailored to your organisation.
4. Implement Changes and Monitor Progress: Use the insights to create targeted initiatives and track improvements over time.
5. Apply for Certification: Achieve recognition by attaining one of ICXI's prestigious performance levels.